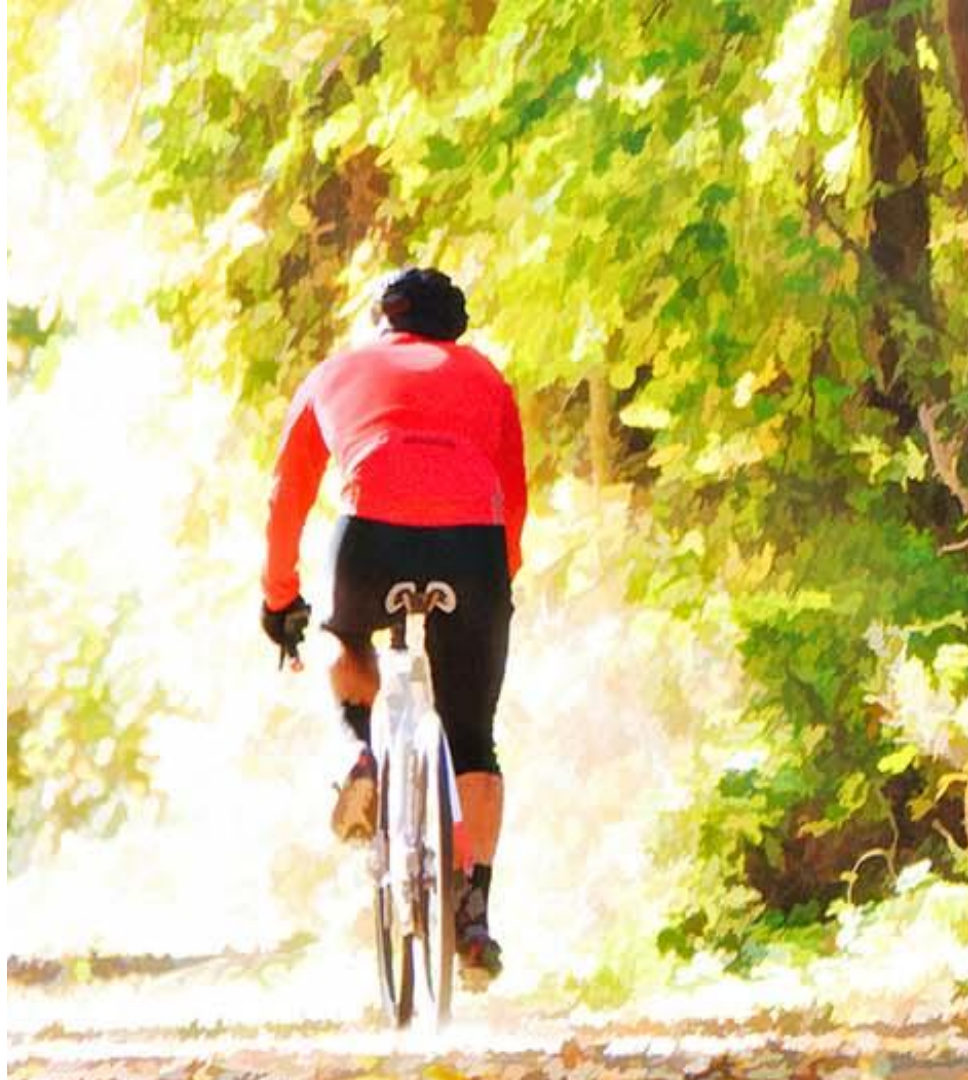


# BIKING IN BABYLON VILLAGE

#bikebabylon



# ABOUT BABYLON VILLAGE

Located on the South Shore of Long Island, Babylon Village is home to approx. 12,000 residents living within an approx. 2 sq. mile area.

Babylon Village belongs to the Carlls River watershed and features the Carll's River connecting the Belmont Lake State Park to the Bay by a nearly contiguous off-road recreational path.





# BICYCLE ADVISORY COMMITTEE

## Who

Made up of Village residents and members of Code Enforcement

## What

Promote and advocate for safe bicycling throughout the village.

## Why

Because bicycling is good for our health and for the environment - a double positive

# BETHPAGE RIDE BIKE SHARE

## Locations

Three recreational locations +  
three commuter locations

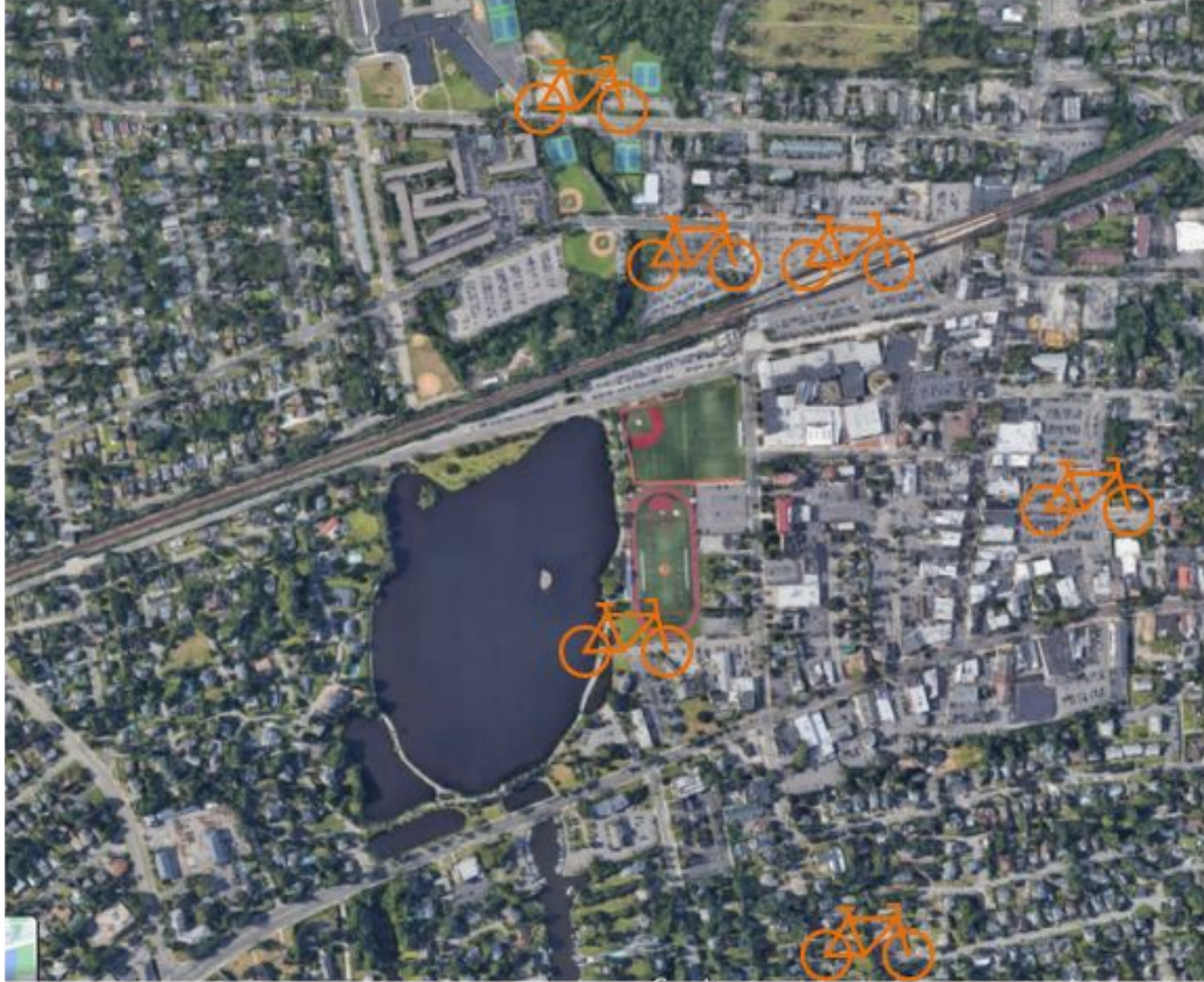
## Mechanics

Run thru an app, \$4/hour or  
\$60/year for unlimited 1 hour rides

## Cost

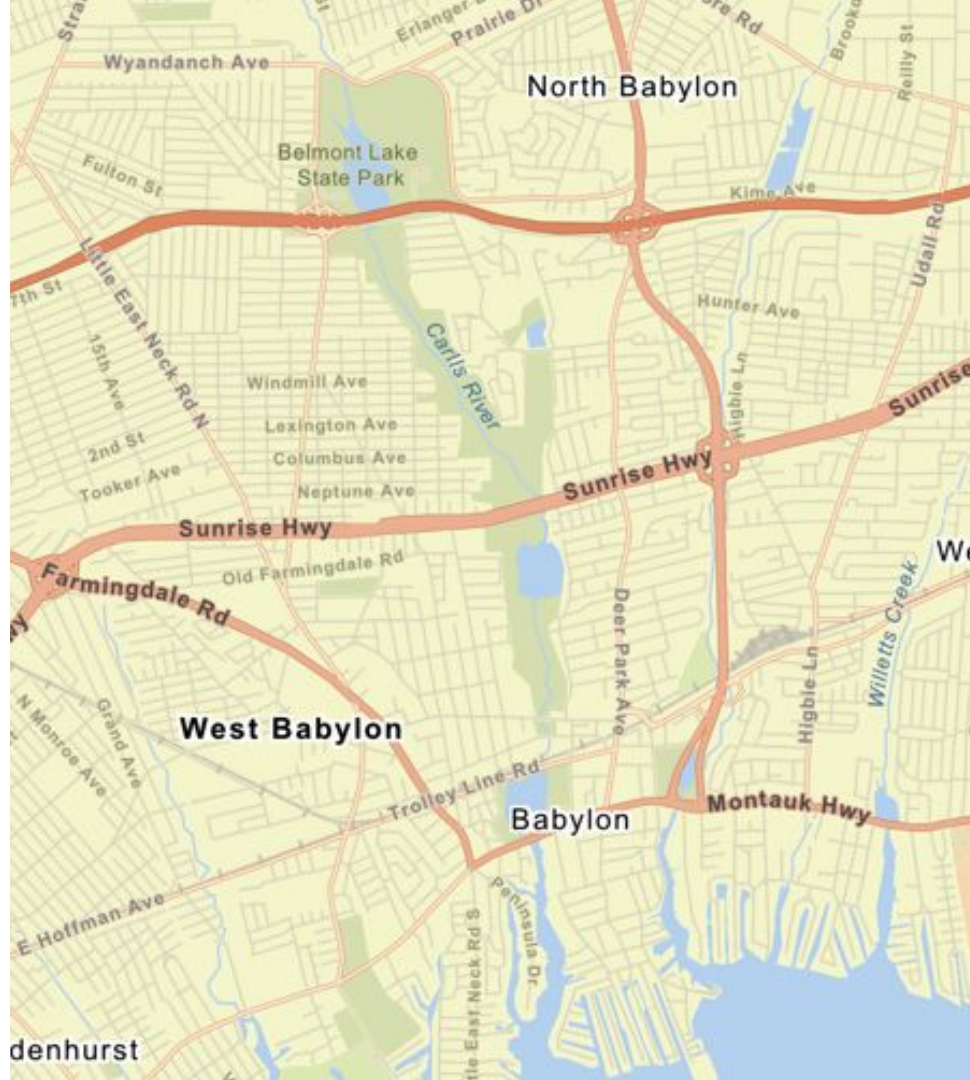
No cost to the Village apart from  
designating space for bike racks





# BABYLON BIKE ROUTES

From Argyle Lake to Southards Pond to Belmont Lake State Park





**Bike Share**

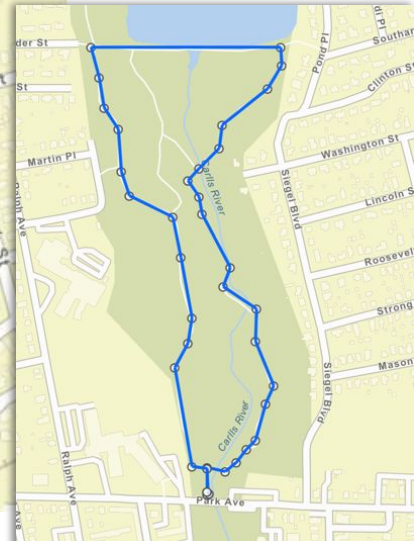
= .75 miles

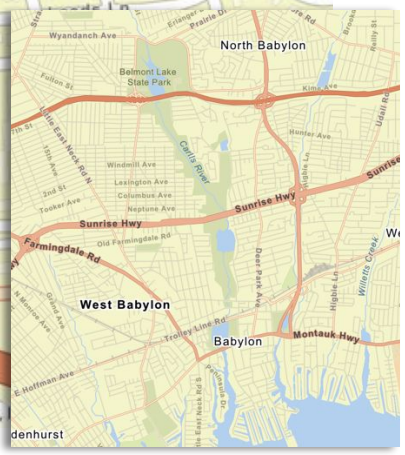
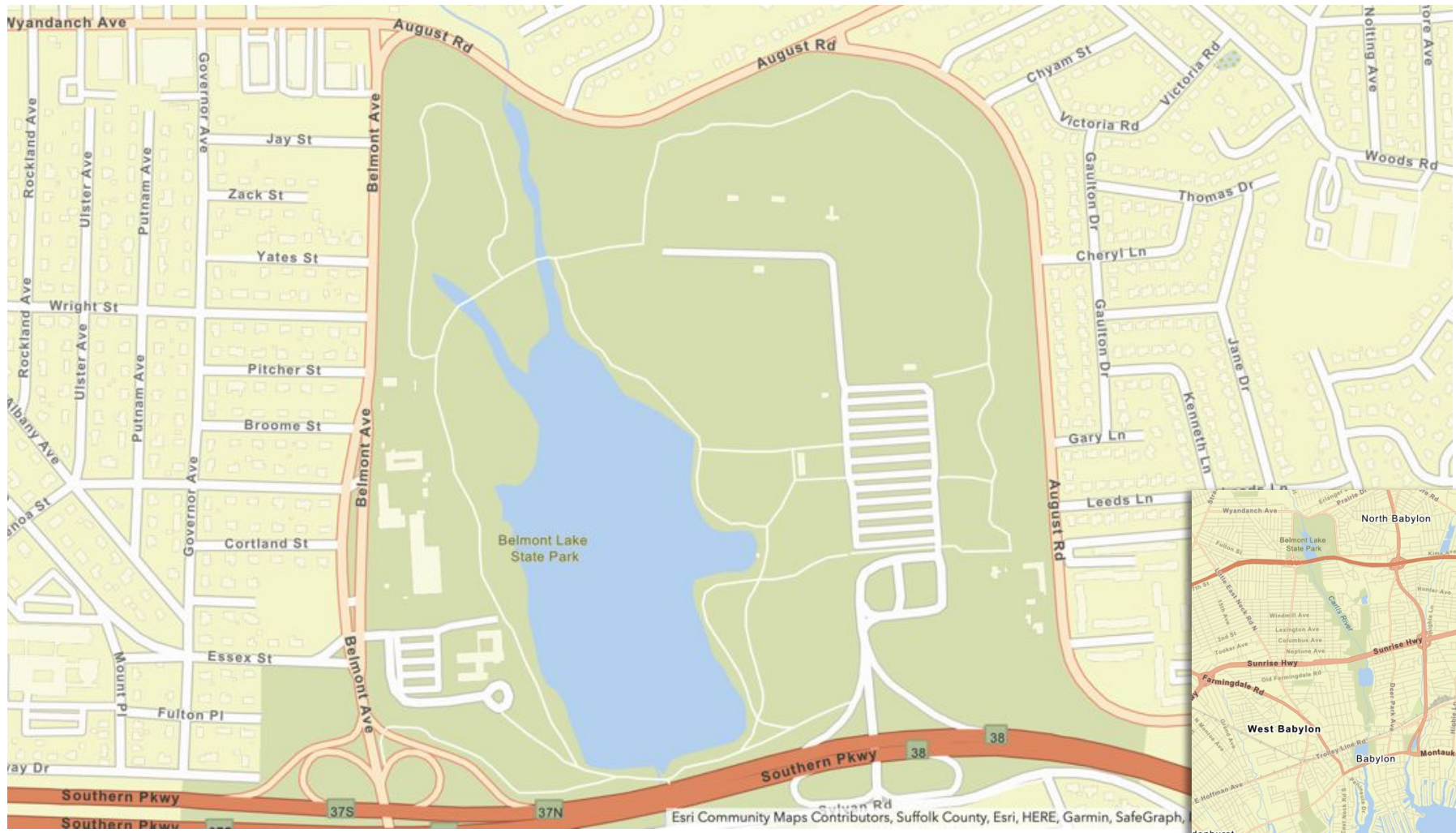
300ft



**Bike Share**

=1.4 miles







# PAST BIKING ACTIVITIES

## **Bike Safety Check Ups**

Complimentary bike check ups conducted by Babylon Bike Shop

## **Bike Safety Day**

Public education on proper helmet fittings & rules of the road with NY Coalition for Transportation Safety

## **Bike Parade**

A safe ride throughout the Village as part of Car Free Week conducted with the support of SCPD & Code Enforcement

# UPCOMING EVENTS

## **Bike Rodeos**

Bicycle obstacle course. Free bike, helmet, brake and tire safety checks + info on hand signals and road sharing

## **Bike Belmont Community Ride**

A group ride open to the community to explore the Southards Pond-Belmont Lake State Park path

## **Summer Recreation Bike Club**

In planning, a possible bike club to teach children how to maintain their bikes combined with short rides.





# PARTNERS & SUPPORT

## **Long Island Transit Solutions**

Mobility Week / Car-Free Day

## **NY Coalition for Transportation Safety**

Bicycle safety education through engaging events

## **Local Bike Shop**

Provides safety check ups

## **Village Social Media**

PSAs on bicycle safety for pedestrians and drivers – May **Bicycle Safety Month**

## **SCPD & Village Code Officers**

Boots on the ground

# CHALLENGES & OPPORTUNITIES

## Lack of designated bike lanes

All roads are unmarked shared lanes

## Signage

Wayfinding maps and street markers under consideration

## Connecting via Bike Share

Collaborative programs to promote inter-municipality bike travel

## Bike gangs

Our activities aim to counter negative association with biking through SCPD and new local code



# END GOAL

- Public education on bicycling
- Create a safe biking environment
- Encourage use of bikes as alternative transportation
- Promote recreational opportunities

If you build it, they will come.



ROBYN SILVESTRI, TRUSTEE

BABYLON VILLAGE

BICYCLE ADVISORY COMMITTEE

[RSILVESTRI@VILLAGEOFBABYLONNY.GOV](mailto:RSILVESTRI@VILLAGEOFBABYLONNY.GOV)

631-848-0210

#BIKEBABYLON

